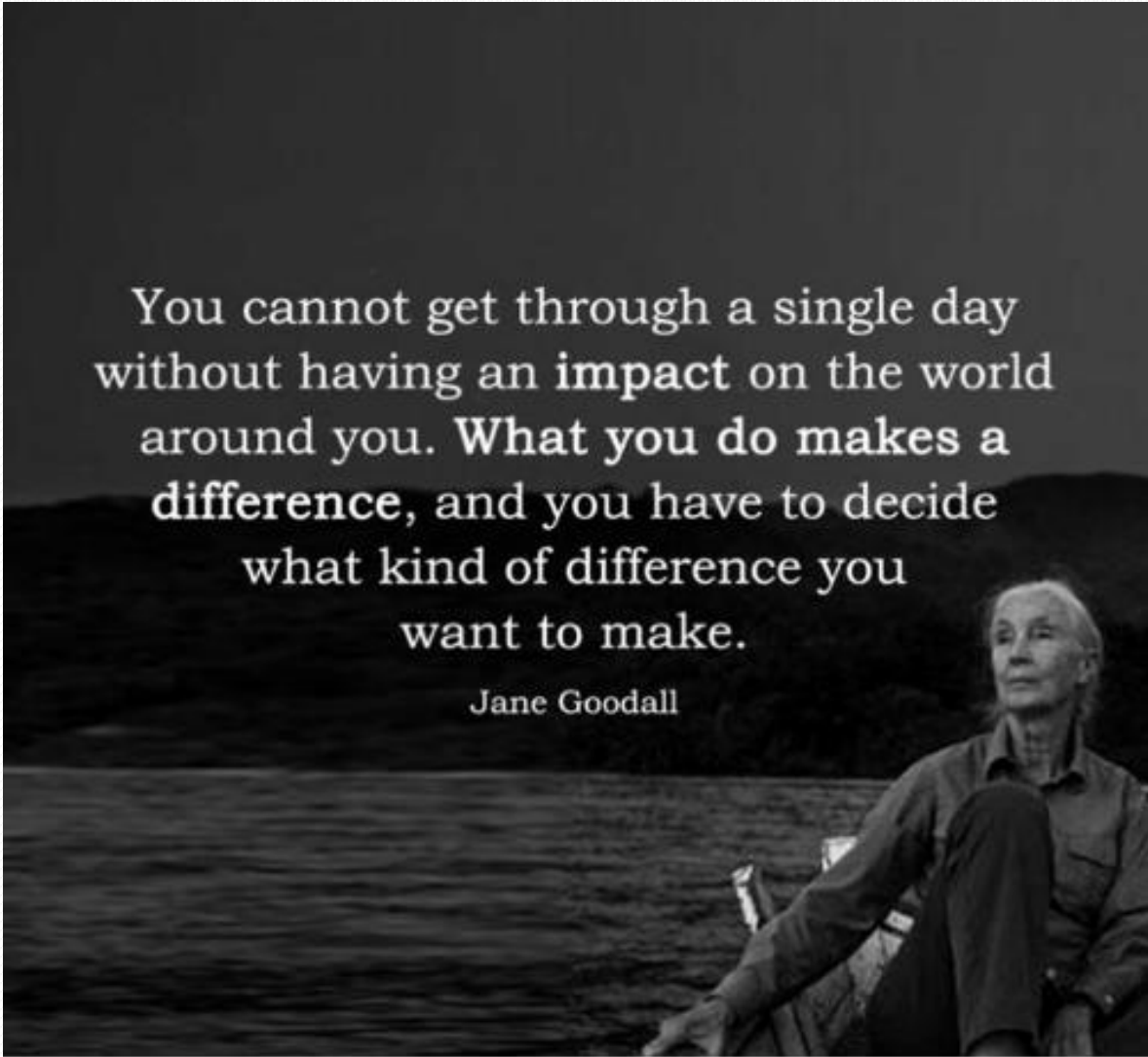




Online Meeting

April 21, 2021

5-6:30 PM



You cannot get through a single day
without having an impact on the world
around you. **What you do makes a
difference**, and you have to decide
what kind of difference you
want to make.

Jane Goodall

Mission of the Working Group

Collaboratively address pressing issues facing the shellfish community, sharing expertise and best practices for management, conservation, research, and monitoring across towns and stakeholders in Casco Bay.

Agenda

- Meeting logistics
- Town sharing
- Shellfish database survey
 - Share results
- Discuss WG projects
 - Conservation activities
 - Ecology survey methods
- Announcements
- Next steps



Meeting logistics - Zoom

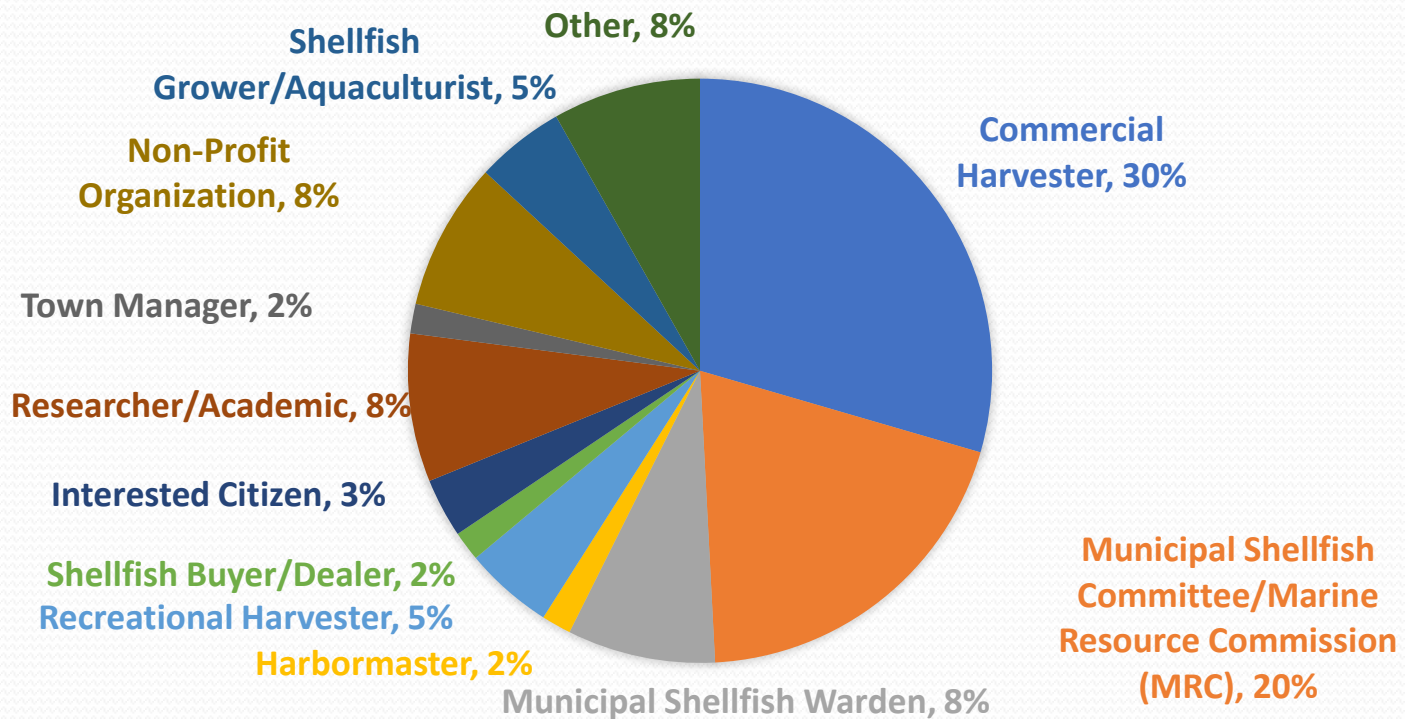
- Everyone is muted, and you will be able to unmute yourself during the town sharing and discussion sessions.
- If you have a question or comment:
 - On your computer/app, please use the chat box (hover over the bottom of the window and click the 'chat' icon, which will open a side panel). We will either read your question or unmute your line.
 - Or you can open up the 'participant panel' and raise your hand.
 - Speaker view – default
 - This meeting is recorded

Town Sharing

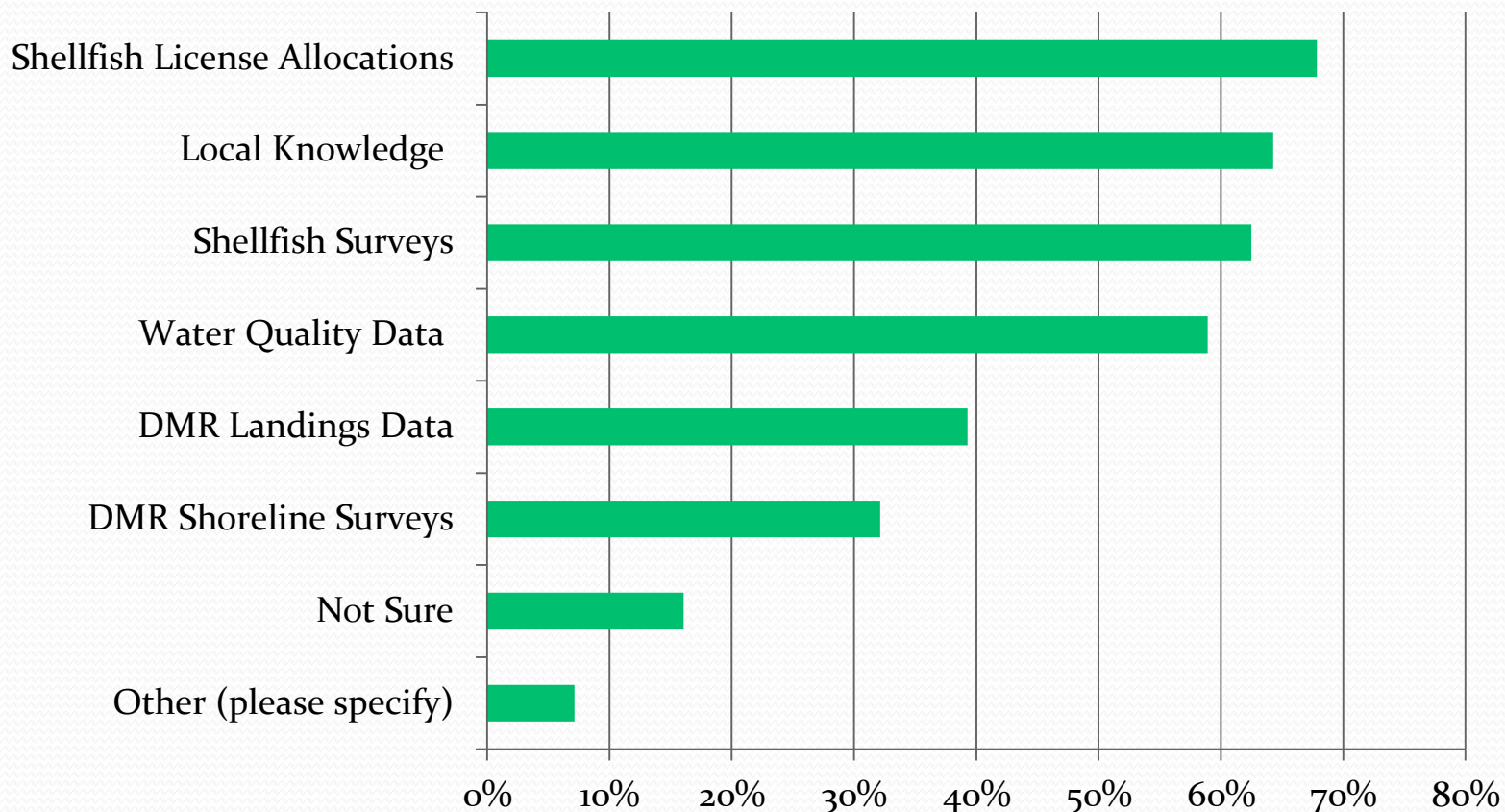
- What is the current focus of your committee?
- What is the status of your conservation program (points and/or hours)?

Shellfish Database Survey

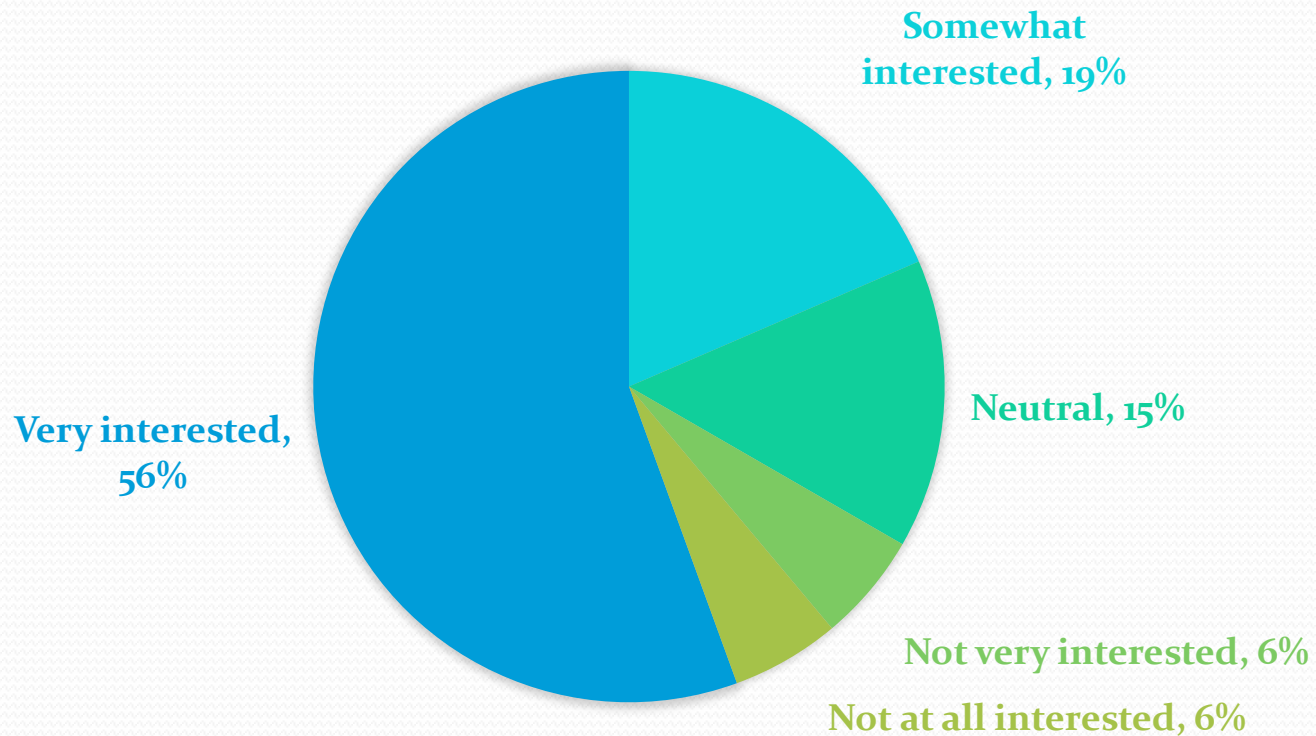
Primary Role in Shellfish Community



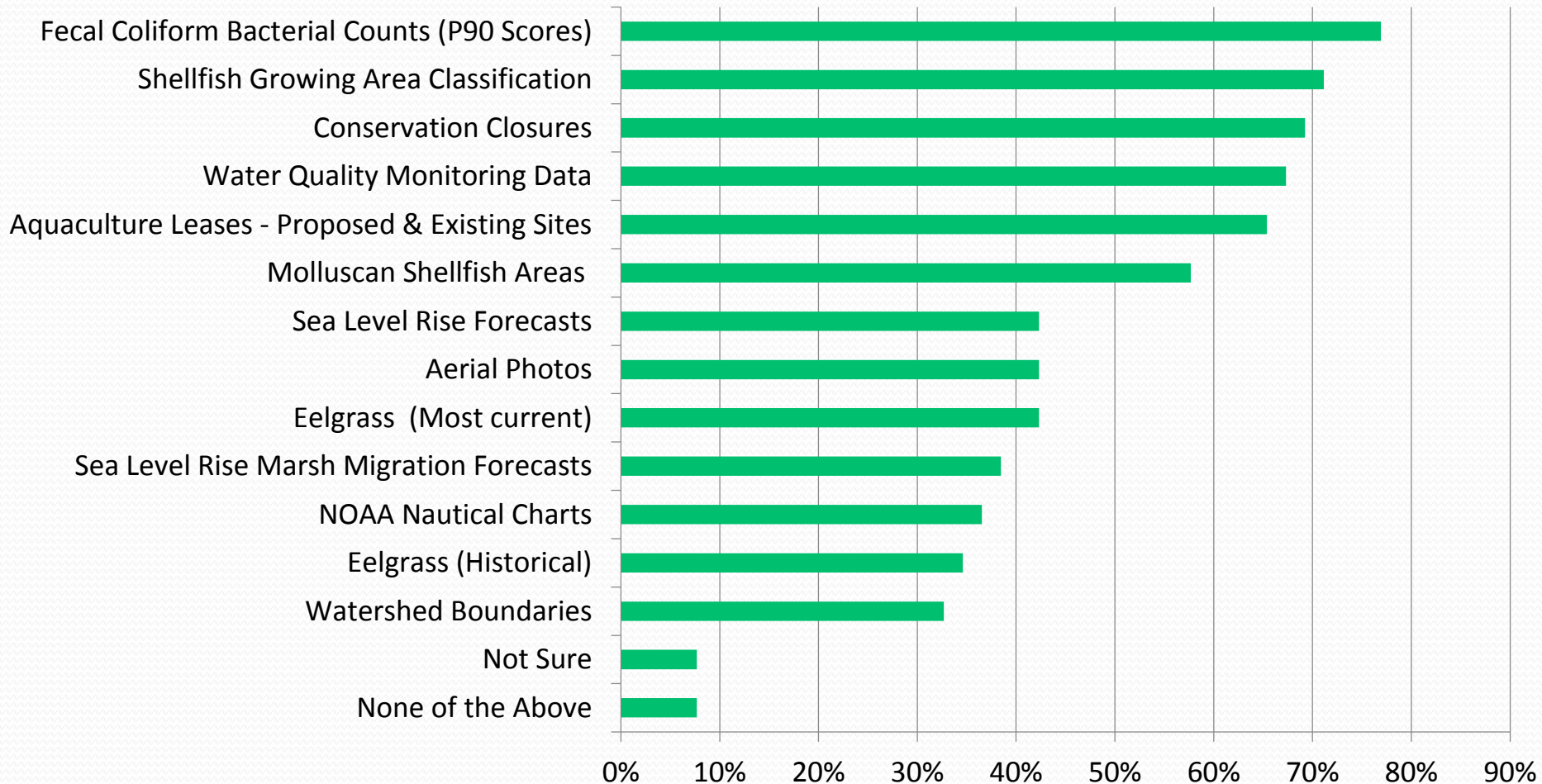
What type of information does your municipal shellfish committee use on a regular basis to inform decision making about your shellfish program?



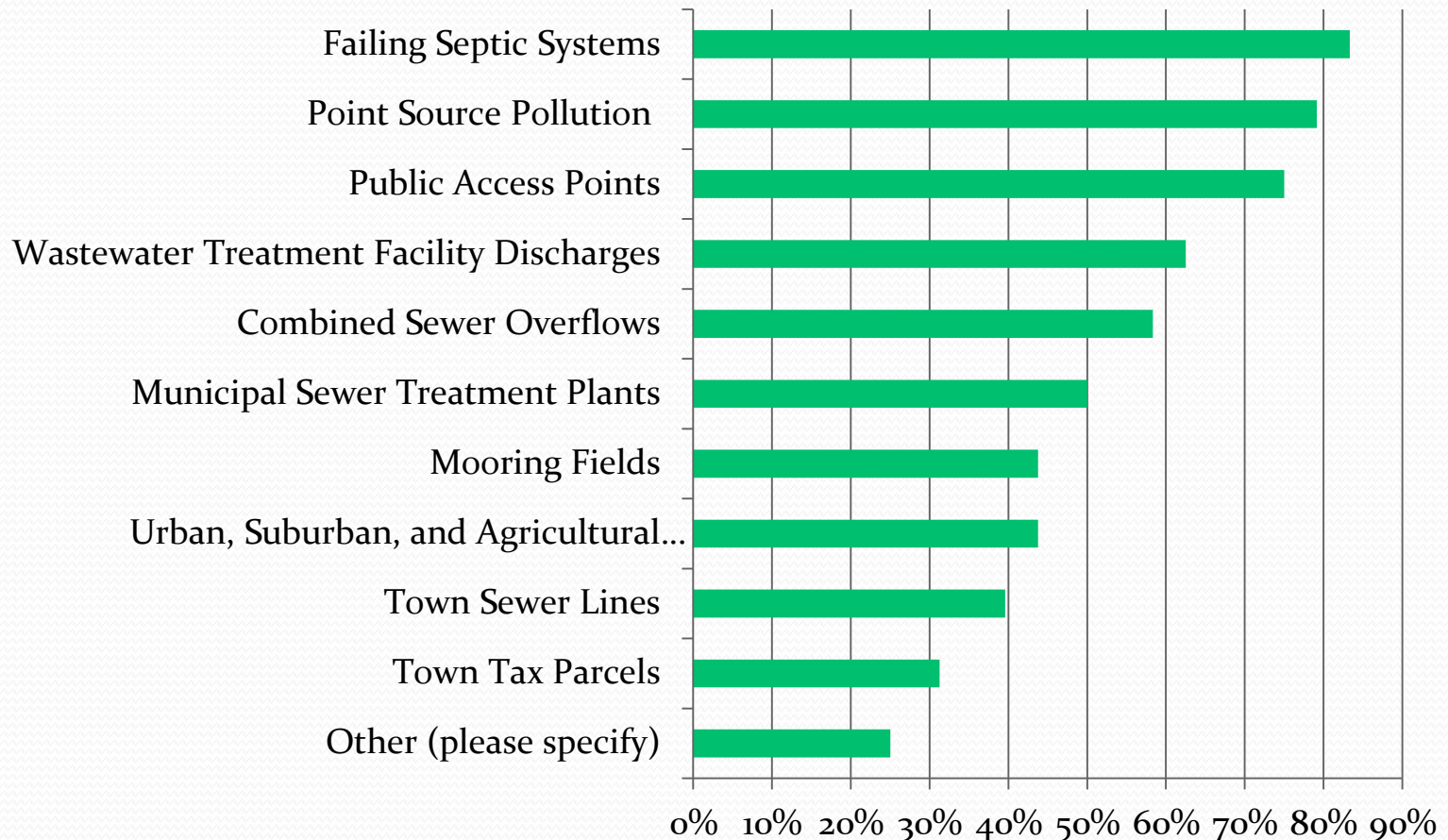
How interested would you be in shellfish data being compiled into an online location available to the public?



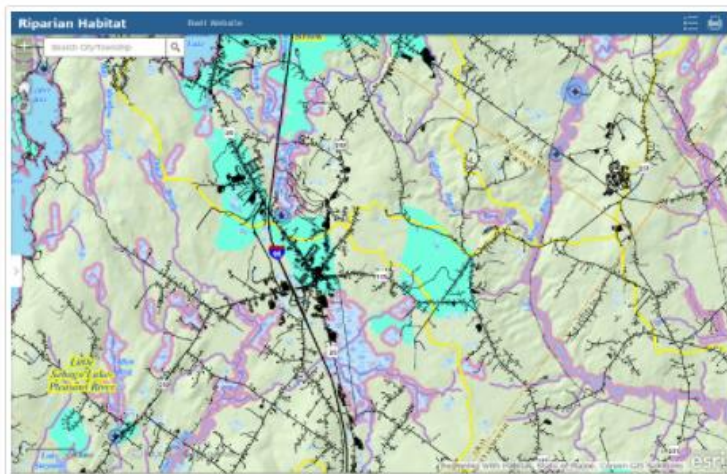
Please select the marine or environmental data/information you would be interested in viewing.



What data or information would you be interested in viewing when making shellfish management decisions?



Map Viewers



Map 1- Riparian Habitats

Beginning with Habitat Map 1 depicts major surface water features and drainage areas, associated shoreline habitats and riparian zones, and aquifers and wells that supply public drinking water.

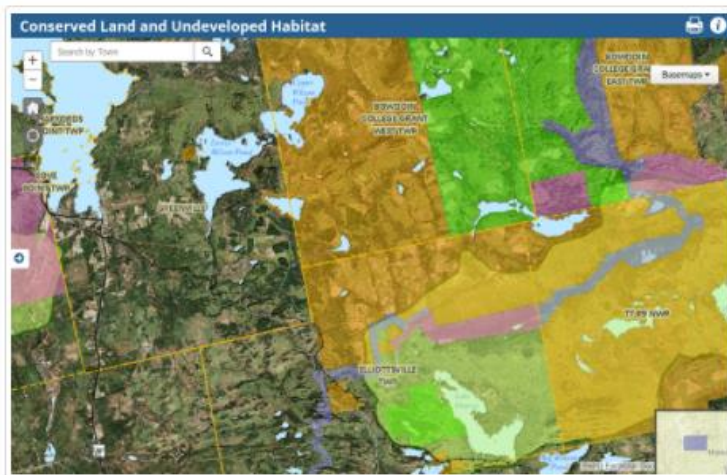
[Open Viewer](#)



Map 2- Plant and Animal Habitats

Beginning with Habitat Map 2 depicts known rare, threatened, or endangered plant and animal occurrences, as well as "Significant Wildlife Habitat," "Essential Wildlife Habitat," and other important wildlife habitats.

[Open Viewer](#)



Map 3- Conserved Land and Undeveloped Habitat

Beginning with Habitat Map 3 depicts the State of Maine's conserved lands database including lands in federal, state, and nonprofit ownership.

Conservation Activities

- Compiling a list of shellfish conservation activities
 - Green crab trapping
 - Predator netting
 - Recruitment boxes
 - Seeding (Soft Shell Clam or Quahog)
 - Growing seed for enhancement activities
 - Transplanting and/or relaying clams
 - Shellfish surveys (Soft Shell and Quahog)
 - Predator surveys and/or monitoring
 - Seasonal harvesting closures
 - Identifying and mitigating pollution sources
 - Brushing

Contact Madeline with comments/questions: mtripp@gpcog.org

Ecological Survey

Announcements

- New website:
www.cascobayregionalshellfishworkinggroup.org
- DMR Shellfish Advisory Council Meeting
 - April 29: 1- 4 pm
- Maine Coastal Program Shore and Harbor Planning Grants (FY22), due May 3rd
 - <https://www.maine.gov/dmr/mcp/grants/shore-and-harbor-planning-grants.html>

Thank you, Anne!



Next Steps

- Presentations to town council/board of selectmen
- Shared equipment library
- Spring/summer demonstrations and field work
- Next meeting will be late fall
- Thank you!