

Casco Bay Regional Shellfish Working Group



December 6, 2022
Brunswick

Introductions



Agenda

10:00 - CBRSWG overview

10:05 - Town Sharing

10:30 - CBRSWG updates

10:50 - Group discussion

11:25 - Announcement and next steps

11:30 - Adjourn



Mission of the Working Group

Collaboratively address pressing issues facing the wild-harvest shellfish community, sharing expertise and best practices for management, conservation, research, and monitoring across towns and stakeholders in Casco Bay.

Town Sharing

1. What are the current focus areas for your committee or harvesters in your community?
2. What are the obstacles to addressing the shellfish community's needs?
3. What are one or two shared topics or issues in the region you would like the WG to consider focusing on in 2023?



Preserving Intertidal Access

- Guidance document for coastal stakeholders and municipalities who want to protect and expand intertidal access in their communities
- Developed based on input from towns, state agencies, land trusts, etc.



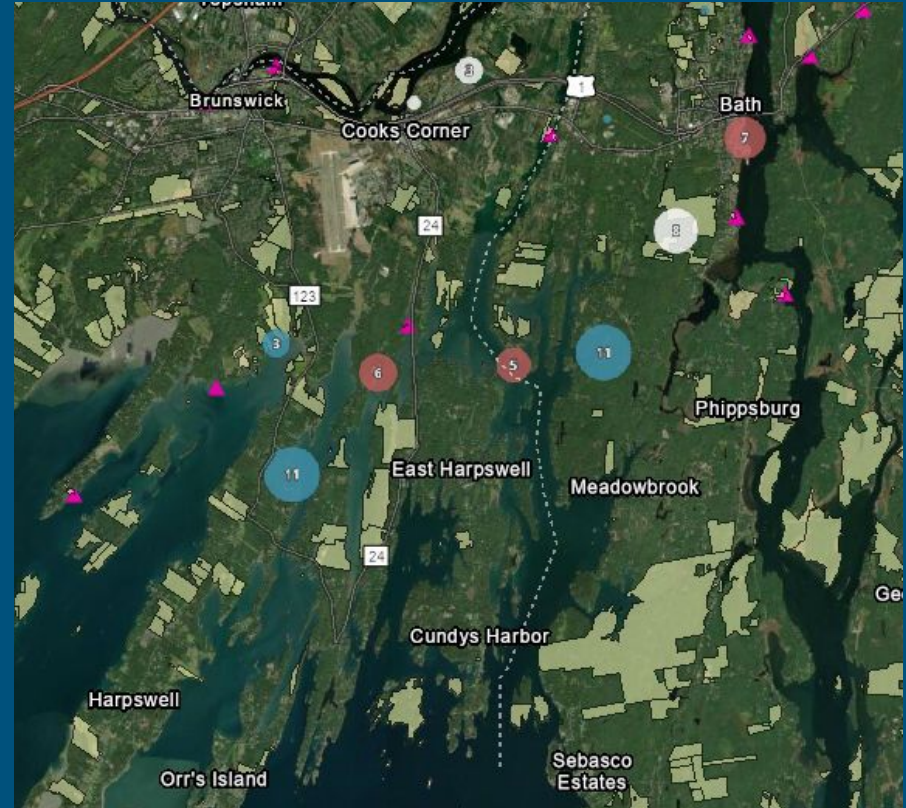
Preserving Access to the Intertidal

A guide for coastal stakeholders and municipalities



Intertidal Access Mapping

- Inventory public and private access to the intertidal
- Roadmap for other towns who want to inventory access
- Identify and pursue priority areas to formalize, improve, or acquire access
- Sea level rise impacts

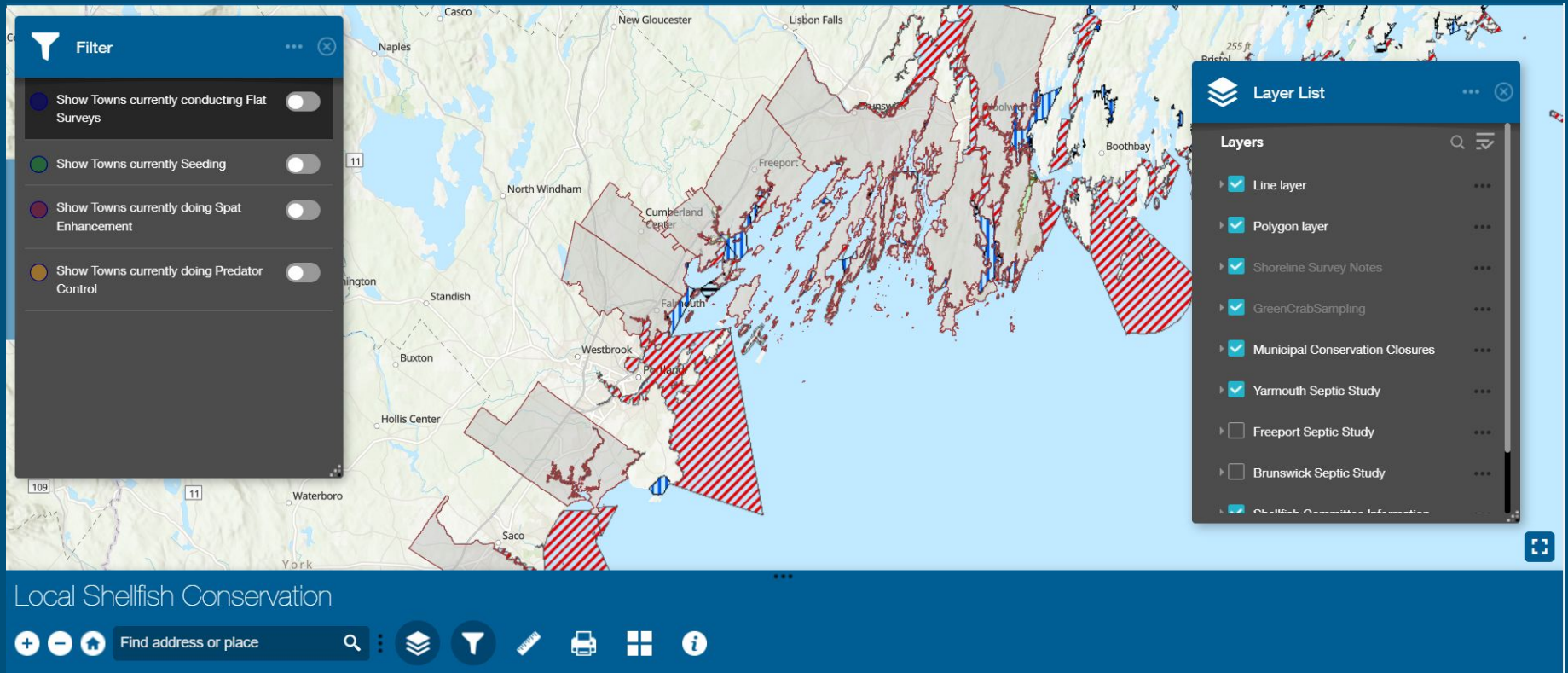


September WG Meeting with Land Trusts

- 9 land trusts attended
- Shared examples of previous land trust / shellfish committee collaboration
- New connections



CIDP - Local Shellfish Conservation



<https://bit.ly/IntertidalData>

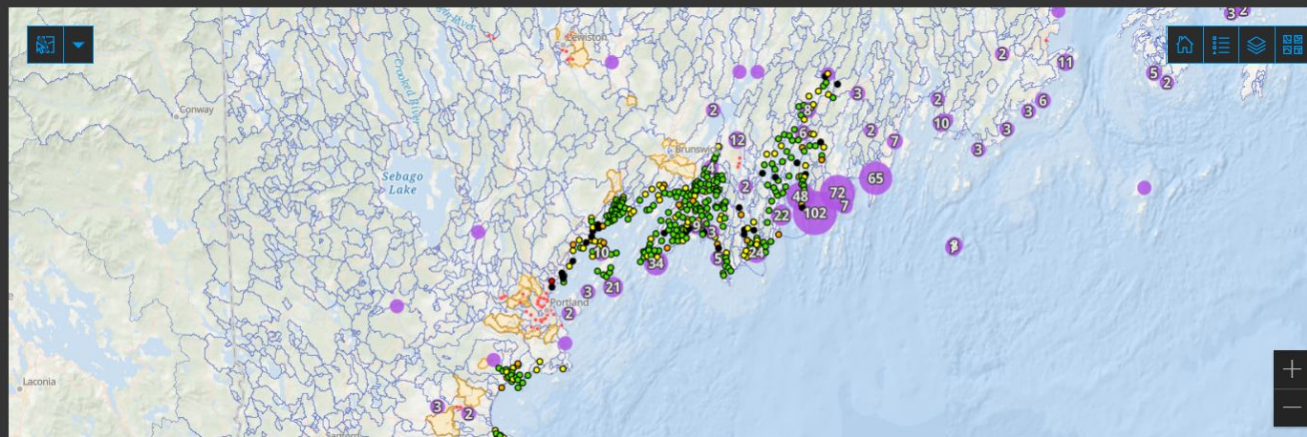
CIDP - Water Quality Dashboard

Water Quality Dashboard

This dashboard includes multiple sources of data to help identify and mitigate pollution sources that adversely affect water quality in the intertidal.

The overboard discharges, combined sewer overflows, P90 scores, and watersheds on this map help to understand potential pollution sources and locations. Bacteria from human or animal waste can close waters to shellfish harvesting and understanding what pollution sources are contributing to these closures is the first step to mitigation.

Data in the charts and indicators reflect the data points in the area that is zoomed in (or current map extent, I'm just not sure how many people are familiar with that term).



CHS, Esri, GEBCO, DeLorme, NaturalVue | Maine Geological Survey | Maine DEP | Maine Department of Environmental Protection | Esri, HERE, Garmin, SafeGraph, FAO, METI/NASA, ... Powered by Esri

General Notes

DMR P90 Scores

Water Sampling Stations

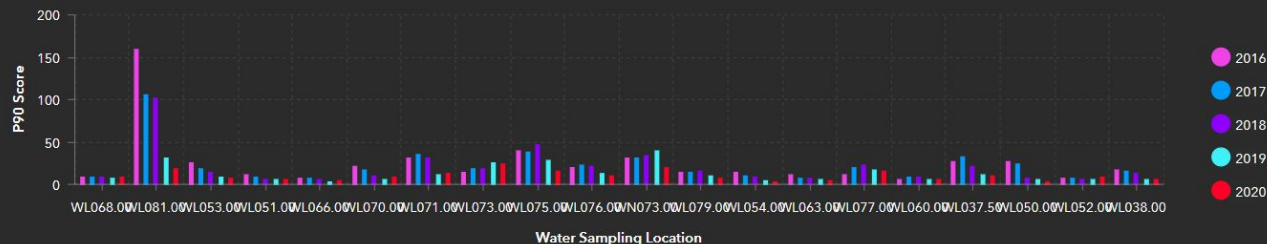
374

Overboard Discharge Permits

560

P90 (2016 - 2020)

Chart reflects Sampling Station shown in map. Click on the chart to select a particular point or set of points. Select points on map to see them reflected in the chart.



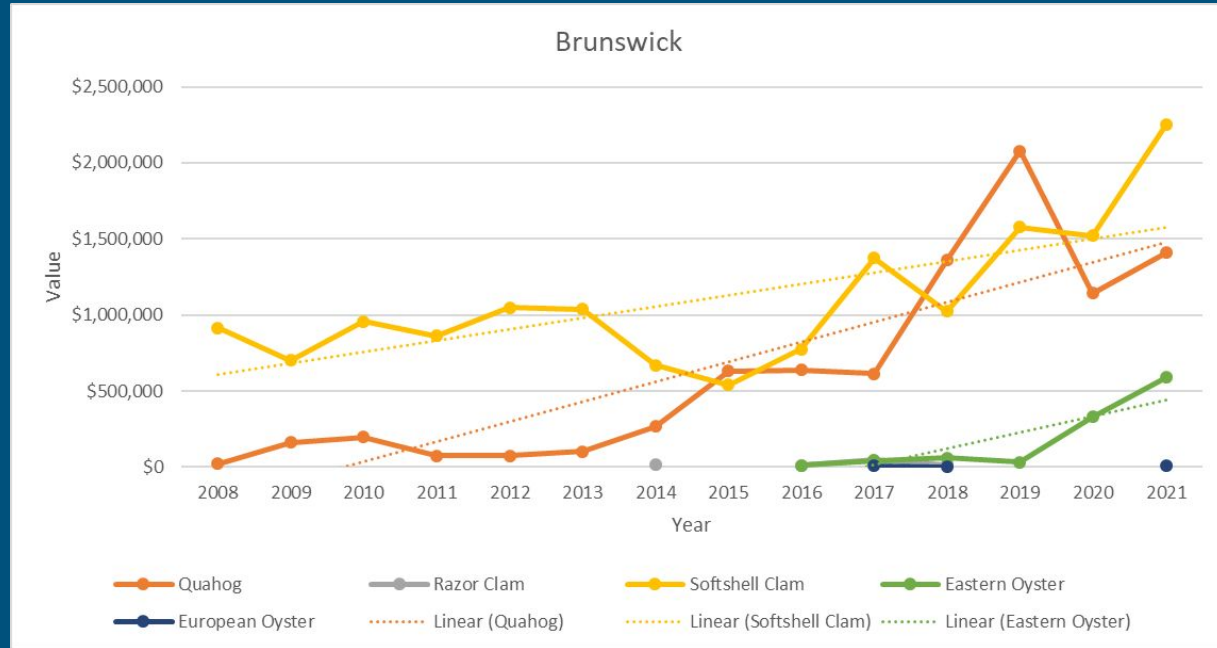
Casco Bay Shellfish Landings

DMR Landings Dashboard Viewer:

https://mainedmr.shinyapps.io/Landings_Portal/

Data from 2008-2021

Confidentiality rule: Needs to be at least 3 harvesters and 3 dealers reporting landings from particular town for data to be public



Discussion

Airboat Stakeholder Group

Current regulations:

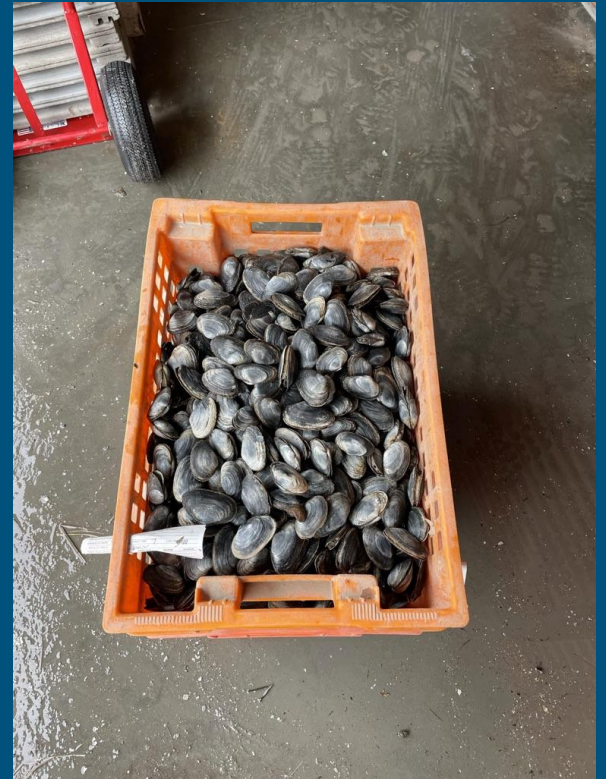
- 75 db max. Between 7 PM- 7 AM
- 90 db max between 7 AM - 7 PM

Regulations have a sunset (end) in September 2023

Airboat consensus group has been meeting to discuss compliance and other alternatives to the current regs

Announcements

- ShAC meeting on December 14th in Ellsworth and online
- Fishermen's Forum – Shellfish Focus Day:
 - March 2nd at the Samoset Resort in Rockport
- DMR mini grants



Next Steps

- Meeting summary - available online
- Steering Committee - review project ideas
- Next WG meeting - TBD



Thank you!

Marissa - mmcmahan@manomet.org

Emily - efarr@manomet.org

Jessica - Jessica@tidalbayconsulting.com

Working Group: <https://www.cascobayregionalshellfishworkinggroup.org/>

Data Portal: <https://bit.ly/IntertidalData>

